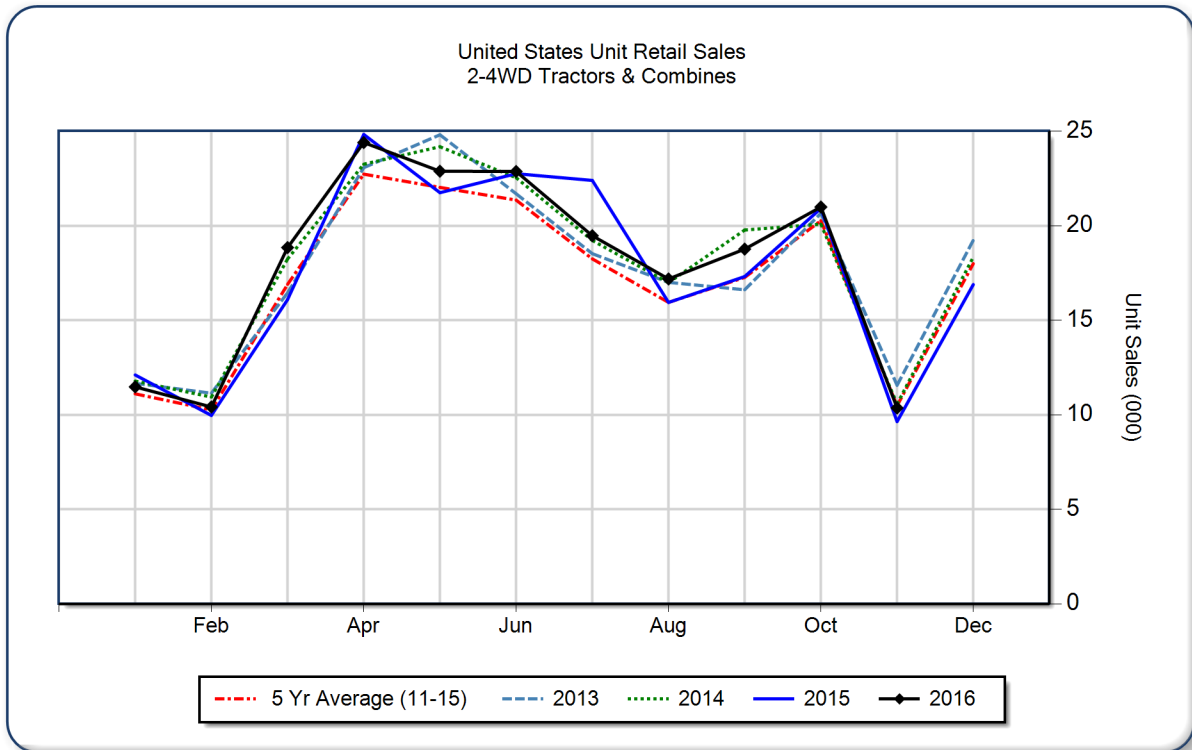




AEM United States Ag Tractor and Combine Report November 2016

Copyright, AEM. All rights reserved. If data is referenced, please acknowledge AEM as the source.

	November			YTD - November			Beginning Inventory Nov 2016
	2016	2015	%Chg	2016	2015	%Chg	
2WD Farm Tractors							
< 40 HP	6,442	5,254	22.6	123,891	110,909	11.7	69,457
40 < 100 HP	2,974	3,131	-5.0	51,422	53,685	-4.2	34,758
100+ HP	663	909	-27.1	16,791	21,727	-22.7	9,207
Total 2WD Farm Tractors	10,079	9,294	8.4	192,104	186,321	3.1	113,422
4WD Farm Tractors	137	143	-4.2	2,074	2,703	-23.3	755
Total Farm Tractors	10,216	9,437	8.3	194,178	189,024	2.7	114,177
Self-Prop Combines	142	203	-30.0	3,485	4,690	-25.7	750



The AEM Ag Tractor and Combine Report is provided monthly and is derived from AEM member companies through proprietary statistical reporting programs. The data is provided by AEM members and represents preliminary monthly retail sales of Ag equipment. Separate reports are available for the U.S., Canada and Russia. For more information, please visit: <http://www.aem.org/MarketInfo/Stats/AgTractorCombine/>. Attention media: to speak with an AEM spokesperson about the data, please contact Pat Monroe at pmonroe@aem.org.